

The background of the image is a dark, moody photograph of palm fronds. The fronds are long and slender, with a deep green color that transitions to black in the shadows. They are arranged in a way that creates a sense of depth and texture, with some fronds in the foreground and others receding into the background. The lighting is soft, highlighting the edges of the fronds and creating a subtle gradient of green.

NUUP

REGION 8 - TULUM

Definition

NUUP in the Mayan language means union or connection, reinterpreting the relationship between nature and man.

Based on the desired interaction between the users who inhabit the project and the building to be located, in conjunction with the existing native vegetation of the place and the new one to be located. Encouraging the use of amenities so that users grow a sense of belonging to the place and can develop as a society as long as they remain as a whole







The complex is developed in six buildings that make up their entirety, outdated at each level, achieving a staggering that generates terraces and movement in the interior and exterior facades. In this way, the natural shape of the land is taken advantage of to make the most of the surface to be worked and not generate poorly used or disused spaces.

The project

10 pentgarden 14 one-level apartments 12 loft apartments 4 penthouses

Location





Floor Plans

Penthouse



1386 Sq.ft



Lockoff



3 Bedroom



4.5 Bathroom



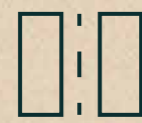
Sky Pool



Pentgarden



1072 Sq.ft



Lockoff



2 Bedroom



2.5 Bathroom



Garden Pool



Two Bedroom



1090 Sq.ft



2 Bedroom



2.5 Bathroom



Balcony Pool



Loft



770 Sq.ft



1 Bedroom



1.5 Bathroom



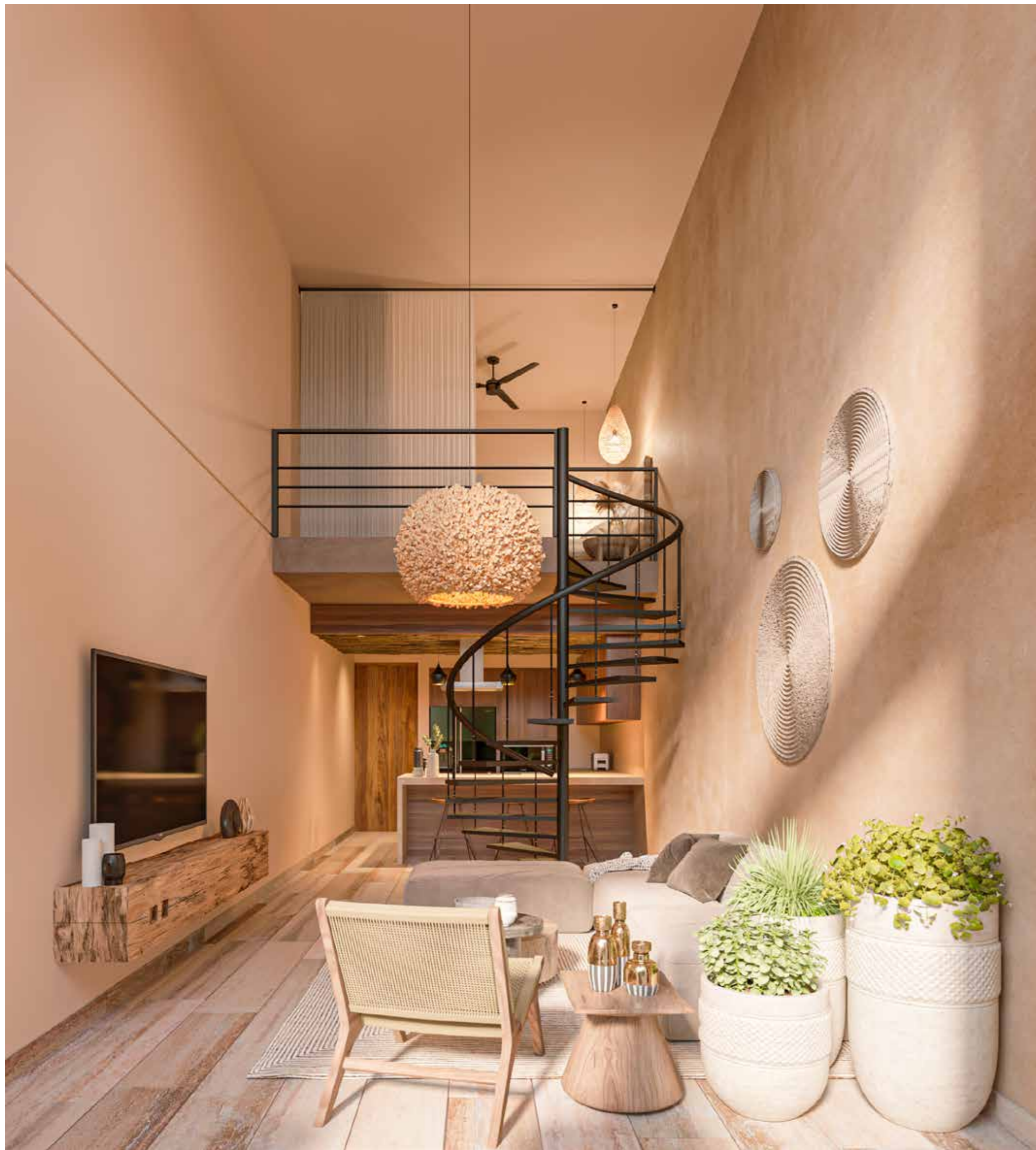
Balcony Pool













Amenities



Rooftop pool / lounge



Fitness Gym



Yoga space



Cafe & Restaurant



Work area



Parking



3 Elevators



Lobby & Security 24/7







Materials & Finishes



Materials from the region are proposed in natural tones to mimic the context through finishes such as chukúm in exteriors and interiors, natural stone on adjoining walls as a contrast between the polished finishes and the roughness of the stone.

NUUP

REGION 8 - TULUM



NET REAL ESTATE
Let me find your home in paradise

@nuup_tulum
info@net-realestate.com
net-realestate.com