

TAMBARARA HOUSEBOAT



A beautiful; modern; newly built 3-storey pontoon houseboat – max pax 20 (14 for comfort in 7 cabins)

Dimensions: Length 25m; Breadth 9m

Motors: 2 x 350HP Cummings diesel motors

Speed: Approx. 10kms/hour

Fuel consumption: still to be determined

Crew: 4 crew members (Captain: Reggis; Chef: Chef-B (Benji); Marshall & Ismail as deck-hands)

Generator: 15KVA – approx. 1.2 litres diesel per running hour

Generator turned off at 10pm and then the 12-panel solar/5KVA inverter system clicks in and can run fans all night (NOT air-cons)

Tender boats: 1 x pontoon style tender boat (12 pax) with full shade powered by a 4-stroke 100HP motor; plus a Sabre with 100HP motor. Only to be driven by crew members. No self-drives are allowed

Water: Reverse Osmosis water system and 15 litre Snow Master Ice maker

Kitchen: 6-plate gas stove with large oven; 1 x upright fridge/freezer; 2 x large chest freezers (15 cubic foot); microwave; toaster; kettle; coffee plunger; muffin pans

Plug Points: 3-Pin Square UK/Zimbabwean style AND 3-pin South African style and lots of USB points throughout the houseboat

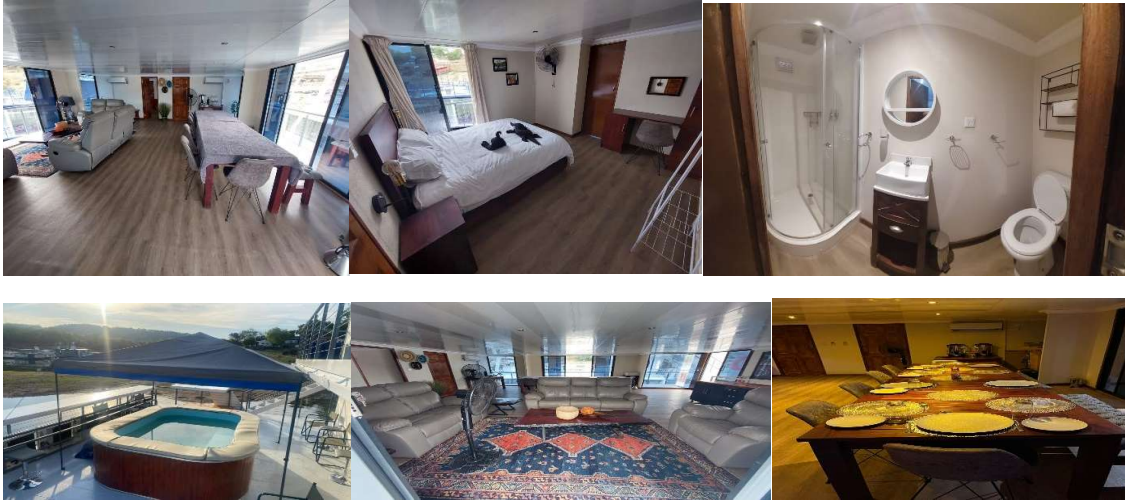
Hot water system for showers: solar panels with backup power from the generator

Braai: gas braai on board

Lower deck: 5 x twin bedded cabins with a/c and all en-suite (shower/basin/toilet); all cabins also have glass sliding doors leading outside and access through the central passage-way; fully equipped kitchen; staff quarters; storage room



Middle deck: large splash-type pool with roll-out sun cover; comfortable bar chairs on the outer deck with casual director chairs; closed in lounge/dining area with air-con & fans; comfortable lounge suite; 2 x Executive rooms leading off the main area both with a/c; queen bed & en-suite shower/basin/toilet, both cabins also have glass sliding doors leading to the outside deck; public toilet with shower and basin.



Top Deck: large open deck with full shade with U-shaped lounge area and bar with 3-door bar fridge and a small chest freezer; smaller back deck open to the sun and with 4 x pool loungers that can convert to beds for people wanting to sleep on top deck



Additional Information: Toilet paper & cleaning materials: will be supplied on each charter

Mosquito nets: on request only for the cabins as all cabins are fully air-conditioned and have fans that run all night

Cold boxes for use on tender boats are available on board

Directions to harbour: The Tambarara is currently moored at LAKE ENTERPRISES in Andora Harbour.

Proceeding from Harare side of Kariba, the best route to take is the Dam Wall road to Zambia. You will pass a service station on your right and further on, just opposite the Zesa Offices turn left. Pass Swift Transport Yard and turn immediately left again. At the top of the second rise turn right. Proceed to end of road and turn left through a gate.

DATE OF ISSUE: 9TH November 2022