



SADC CONFERENCE RACK RATES
VALID: 01 JANUARY 2024 - 31 MARCH 2025
ZAMBEZI TRADER SET DEPARTURES

DECK	NUMBER OF CABINS		RATE
A DECK	16 Standard Twin Cabins	Sharing	USD 245
		Single	USD 319
B DECK	5 Family Cabins	Sharing 4 pax	USD 795
		Sharing 2 pax	USD 490
C DECK	8 Luxury Suites	Sharing	USD 395
		Single	USD 514

Minimum Daily Wet Charter US \$10,000. Minimum 2 nights.

A DECK

- Facilities:** **Gym and Spar.** 16 standard ensuite twin cabins with private balconies and air conditioning.
- Rates include:** Accommodation, all meals, coffees, teas, filtered water, 2 boat based activities of game viewing, fishing per full day cruise, use of gym, swimming pool, games, library, specialist evening talks about the lake and its wildlife and Tongan people.
- Rates exclude:** National Park fees, drinks and transfers.
- Charged Activities:** Game walks, game drives, sailing, paragliding, fishing village tour, on-board spa treatments.

B DECK

- Facilities:** **Dinning room, library, bar, large pool, sun decks.** 5 family cabins that sleep up to 4 pax each.
- Rates include:** Accommodation, all meals, coffees, teas, filtered water, 2 boat based activities of game viewing, fishing per full day, use of gym, swimming pool, games, library, specialist evening talks about the lake and its wildlife and Tongan people.
- Rates exclude:** National Park fees, drinks and transfers.
- Charged Activities:** Game walks, game drives, sailing, paragliding, fishing village tour, on-board spa treatments.

C DECK

- Facilities:** **Private dining, private bar, private pool.** 8 luxury ensuite suites with king sized beds or three quarter single beds with air conditioning and large private balconies.
- C DECK guests have access to use of all facilities on the A DECK and B DECK exclusive access to D DECK that has the Captain's wheel house with 360o views of the lake, private viewing and sunbathing areas.
- Rates include:** Accommodation, all meals, coffees, teas, filtered water, local drinks, all boat based activities of game viewing, fishing, use of gym swimming pools, games, library, specialist evening talks about the lake and its wildlife and Tongan people. Transfers to all local hotels and airport are included. Also included is free access to Kariba Safari Lodge and Crown Eagle Boutique Hotel for early arrivals and late departures use of all facilities for those guests coming in by private charter.
- Rates exclude:** National Park fees, premium brand drinks.
- Charged activities:** Game walks, game drives, sailing, paragliding, fishing village tour, on-board spa treatments.



ZAMBEZI TRADER DEPARTURE TIMES & DATES

Kindly note on Friday to Monday The Zambezi Trader will be out for 3 night Set Departures.

Departing on Friday at 16:00 and back on Monday by 08:00am.

The Zambezi Trader is available for midweek Charters/Conferences and Group bookings.

GENERAL DETAILS

Conference package includes: Projector Screen, Flip Chart Stand, Flip charts paper, notebooks, pens

All rates are in United States Dollars (USD). Payment can be in equivalent international currency (GBP/EUR/ZAR).

All cruise rates are FULLY INCLUSIVE of accommodation, all meals, coffees, teas, filtered water, 2 boat based activities of game viewing and fishing per full day, use of gym, swimming pool, games, library, specialist evening talks about the lake and its wildlife and Tongan people.

National Parks, ZCS Conservation Fees, Fishing Permits and River/ Lake Usage Fees are EXCLUDED - price on application.

Boarding / disembarking could be by speed or pontoon boat to and from harbour.

Zambezi Cruise Safaris reserves the right to limit the number of single cabins.

Please note that land based game drives and game walks are subject to pre-booking and limited to certain areas on the Lake.

National Parks, ZCS Conservation Fees, Fishing Permits and River/ Lake Usage Fees are EXCLUDED - price on application.

Boarding / disembarking could be by speed or pontoon boat to and from harbour.

Zambezi Cruise Safaris reserves the right to SUBSTITUTE one of our larger 10 cabin vessels, should we not reach min numbers to sail on the Zambezi Trader refunded.

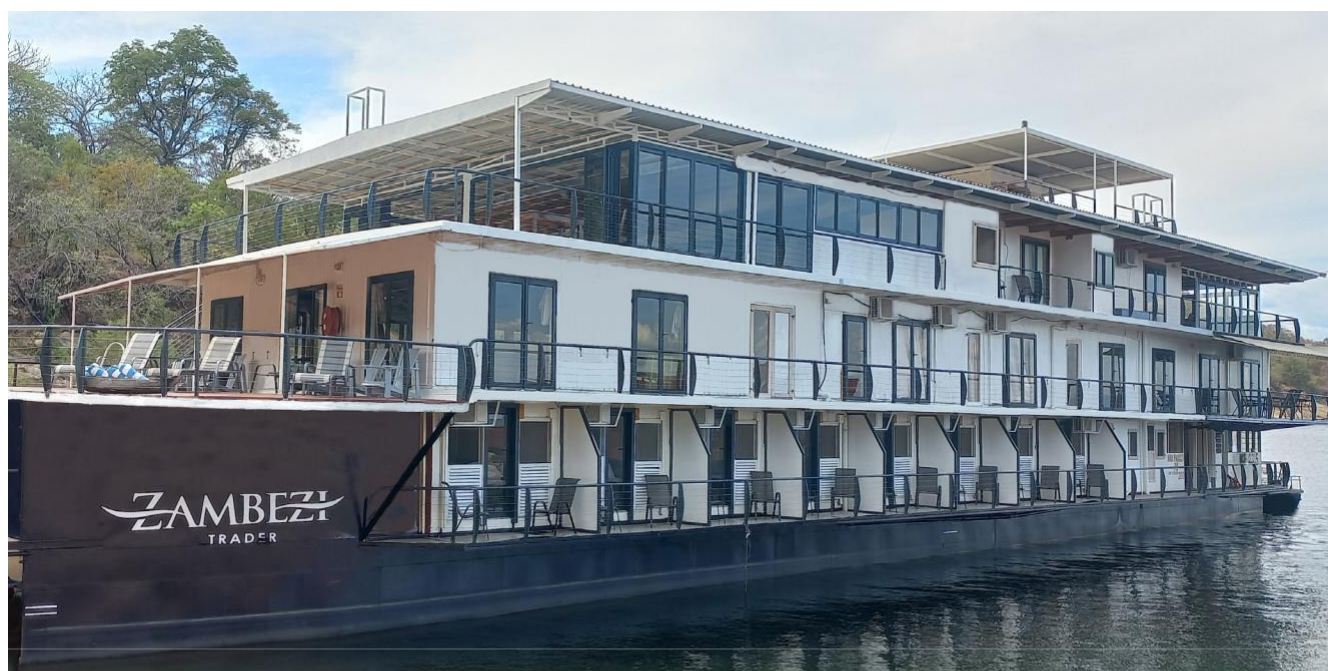
CHILD POLICY

Please note that there are only family configurations available on the B DECK.

No are children permitted on A DECK and C DECK.

No children below 10 years.

No Child rate



Reservation and Enquiries: info@zambezicruiseandsafaris.com

Standard Trading Conditions Apply. E&OE.

Issue Date – January 2023