

A sunset over a body of water with a green overlay containing text.

FLAME OF AFRICA

# The Lady Jaqueline



Where safari,  
fishing and true  
relaxation  
combine in home  
style luxury...  
shared  
exclusively with  
those you choose  
to have onboard

# Accommodation

- 2 Double air-conditioned stateroom cabins complete with bathroom-en-suite (shower, toilet and hand basin).
- 1 Bunk Cabin Twin bunk beds Pullman style (2 Beds).
- 1 Bunk Cabin with 2 sets of Bunk Beds Pullman style (4 beds).
- Due to the size of the bunk cabins, a powerful air conditioner is situated in the passage in order to cool these cabins.
- Separate Bathroom (Shower, toilet and hand basin).
- Limited mattresses and mosquito nets for those who wish to sleep on the top deck.
- Separate crew quarters with their own ablutions.
- Good quality fans that can run 24/7 thanks to our solar 3kva inverters..

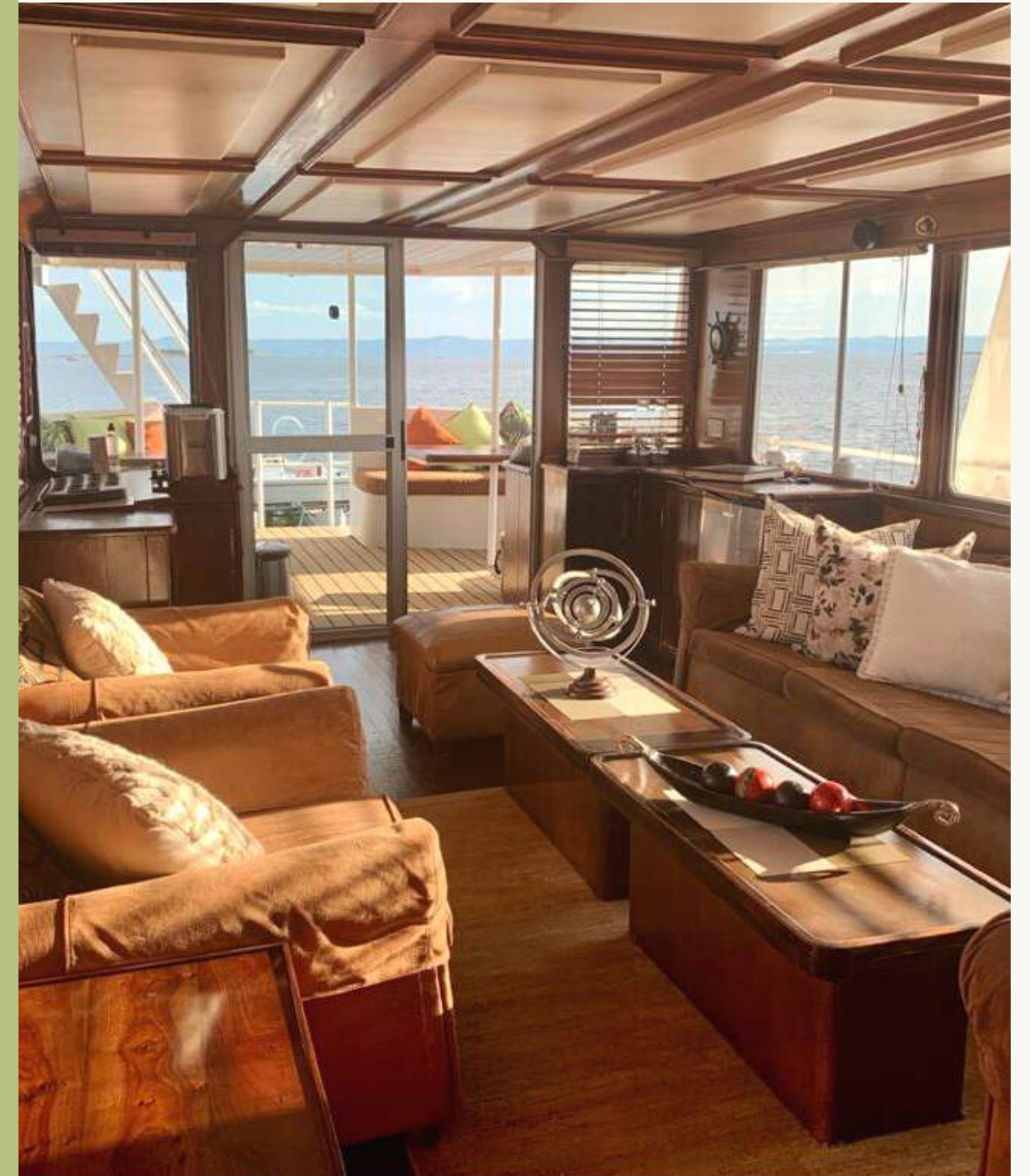




## Mid Ship

The middle deck houses a spacious, air-conditioned saloon.

- Equipped with a DVD home theatre, colour TV, video and a CD player.
- A selection of natural history books, novels, videos, CD's, DVD's, board games, cards etc. are available.
- It has an ice maker and a bar fridge.





## Upper Deck

Offers an element of privacy ideal on a cruiser of this type. A place where guests are alone and free to bask in the sun, or sip ice cold drinks from the bar while the crew pamper your every need.

Much of the dinning is enjoyed in this space too.

A jacuzzi is incorporated into the front deck, negating the need for bathers to brave the lake waters, especially when moored.

There is a bottle cooler, a triple door bar fridge on the upper deck and an ice maker.



*Lady Jacqueline*



## On Board Equipment

- The Lady is powered by twin in-board Volvo Penta turbo charged diesel engines.
- The silent-run generator and back up 3KVA solar system supply constant 220v power when required.
- Garmin GPS navigational equipment and depth finders.
- The galley is equipped with microwave oven, deep freeze and fridge..



The Lady Jacqueline

Little A

2277

Miss J





## Tender Boats

There's two tender boats to choose from. The second one may be hired at a nominal fee.

### 8 Seater Raft:

Ideal for fishing, game viewing and sun set cruises - it includes comfortable seating, 40hp, 4 stroke Yamaha engine that is smooth, quiet and economical.

### 18ft Falcon Speed Boat:

Offering a little more speed with a 80hp, 4 stroke engine and again seating for 8.

# Getting there



## FROM CAPE TOWN

We recommend that you fly into Harare and road transfer down to Lake Kariba. The transfer is about 377km. It is a scenic drive on well maintained roads.

We recommend a mid way stop for lunch at the Chinoyi Caves.

## FROM JOHANNESBURG

The fastest and most cost effective route is to fly into Lusaka and road transfer to Kariba Lake, crossing the border between Zambia and Zimbabwe.

## IF CONNECTING

From Vic Falls, Mana Pool or elsewhere regionally, there are many charter flight options available.



## **Chirorodziva**

*Locally named Chirorodziva (Pool of the Fallen) as this is where the Angonni tribe attacked and then disposed of their victim's remains in 1830. Now only the beauty of the caves remain with the cobalt blue water giving rise to the popular name of The Sleeping Pool.*

# Pre Departure Information



## **Passengers:**

Minimum 4  
Maximum 10 guests.



## **Boarding Time:**

Boarding at 2pm.  
Disembarkation: 10 am.



## **Moored:**

At the Cutty Sark Harbour.



### **Drinking Water:**

There is an H<sub>2</sub>O water purification system on the vessel and it delivers safe drinking water.

If concerned about this please order bottled water which will be deducted from your allocation



### **Drinks List:**

We will require a drinks list to be completed in advance.

Kindly note that this remains subject to availability.



### **Park Fees:**

Please remember to carry cash for all park, lake usage and fishing license fees.

The levies will be payable by you to the National Parks official that may intercept the cruiser on exiting the Harbour. Failing which payment is to be made to the Lady J Captain, who will settle the bill upon return to the harbour.



### **Private Vessel:**

Your own boat may be towed behind "Lady Jacqueline" - entirely at your own risk provided a maximum of two tender boats are towed at any one time.



### **Fisherman:**

If you are a keen fisherman, bring your own rods, tackle and bait.

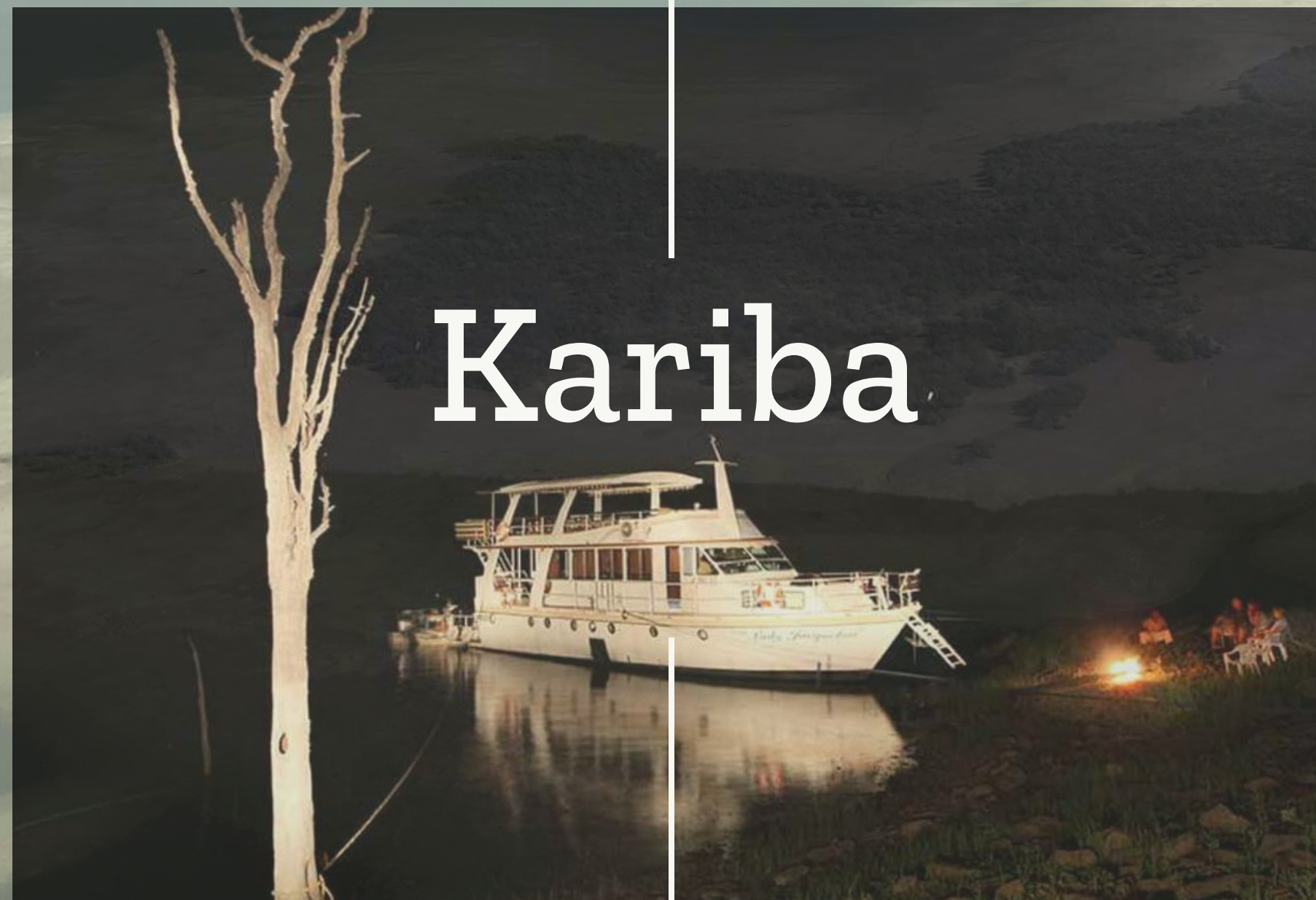
Limited fishing tackle is available for hire from the crew at a cost.



### **Self Drive:**

For our self drive guests there is secure parking at The Cutty Sark Harbour.

**NB!** To All our self drive clients or those that have arranged their own transfers to the harbour: Kindly advise an estimated time of arrival so that our crew is ready to meet you.



# Kariba

## Weather:

*"One moment she's the picture of serenity – stunningly beautiful, calm, and totally at peace with herself. Then, without warning, her whole personality changes"*

Extract from Leisure Boating, as written by Andrew Stone while cruising on the Lady J.

Weather on the Lake is unpredictable and even though the storms rarely last long the crew has the experience required to ensure a safe and enjoyable cruise for all. For this reason the Lady J is Captain driven only and cruising is at his discretion.

## **Power & Fuel:**

The Lady Jacqueline offers power in the form of an 17Kva marine generator, Victron 3Kva inverter and solar power panels that are connected to a battery bank.

Included in the all inclusive rate is an allocation of 8 hour generator time, 3 hour cruising time and a caddy tank of fuel for the tender boat.

The generator simultaneously charges the battery bank which means that there will be ample power for the good quality fans, fridges and ice makers to run 24 hours a day regardless of the weather conditions.

A safe recommendation would be to run the generator and geyser in the evening as guests will be in their cabins.

One should be mindful, that the weather and the distance guests choose to cruise will impact the fuel allocation, however, the crew, will advise accordingly.



