



FLAME OF AFRICA

The Lady J Suggested Itinerary & Menu

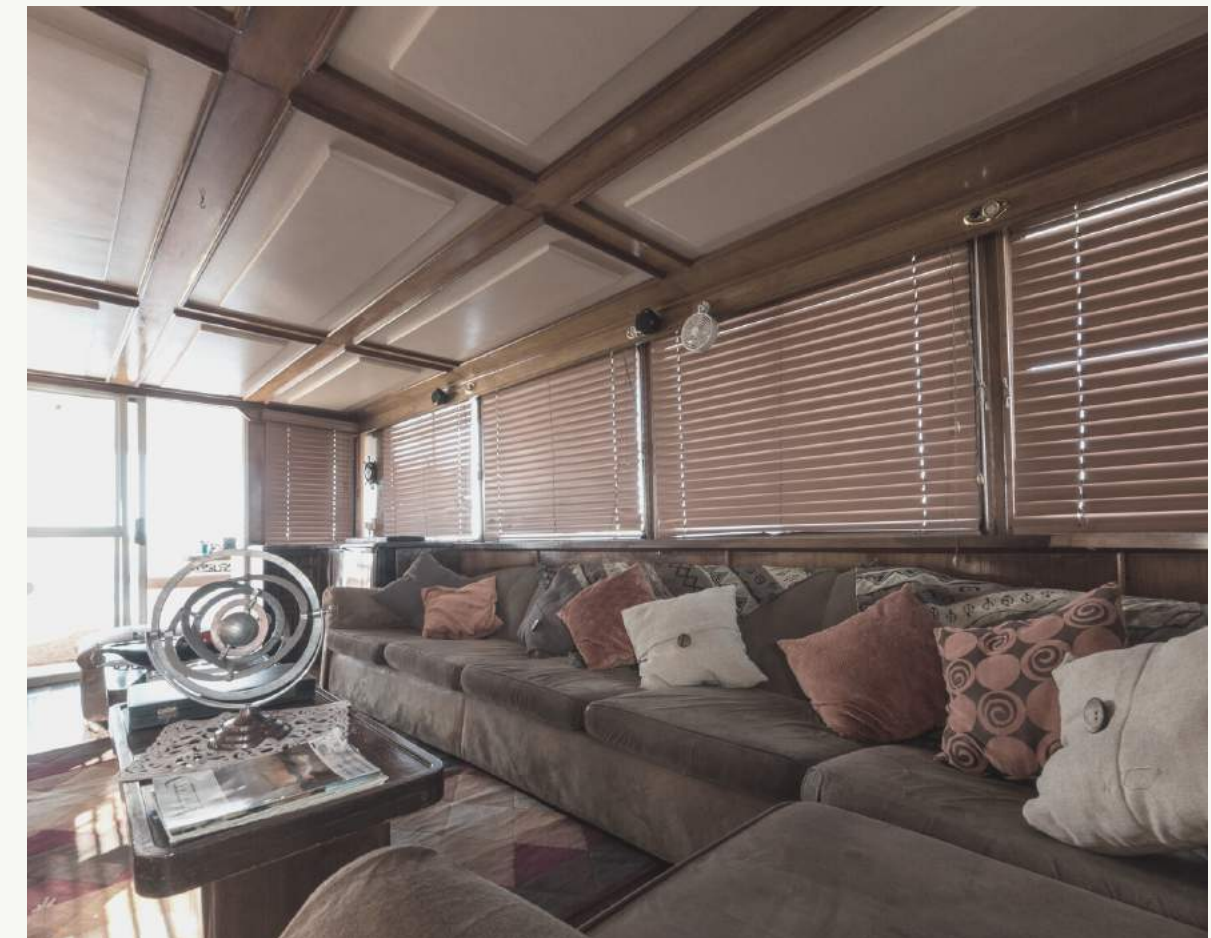


The Lady J invites to come aboard and her exclusively yours. Should you wish to travel far and wide or... find your bit of paradise, moor and explore on the tender boat.

The following, suggested itinerary includes a good mix of scenic destinations, fishing hot spots and superb game viewing whilst being mindful of the daily fuel allocation.

DAY 1 | ANTELOPE ISLAND

Upon arrival, the lovely Lady Jacqueline's crew welcome you aboard. Dotted upon the 5000 square kilometres of Lake Kariba, there are find 8 islands. Tonight, you will call one of these, Antelope Island, "neighbour," as the Lady J moors nearby. ,Many a guest chooses to take advantage of the sandy shoreline and, weather permitting, the crew may light a fire for a beach barbecue. As the bream farms are located adjacent to the island, a record breaking catch may be included on the menu, should you wish to dip your lines in the water!





DAY 2 | PALM BAY

Our destination for today is Palm Bay well-known for lion sightings, their roar will be a lullaby this evening.

Upon arrival, we recommend you take the tender boat up the Sanyati Gorge; 100m basalt high ridges plunging into the waters below and home to black eagles, klip springers and secret waterfalls tumbling into the lake. This cruise will take a full afternoon, arriving back just before sunset, a visual treat not to be missed! Kindly note that an additional park fee will apply.

DAY 3 | GORDONS BAY

We suggest that you linger a little while longer in this area well known for its remote beauty.

Matusadona National Park is in Northern Zimbabwe and was formed in the late 1950's and was proclaimed a non-hunting area on the 7th November 1958 before being declared a Game Reserve in 1963 and only in 1975 did it become a National Park. Its vast area encompasses a combination of pristine and rugged wilderness, magical mountains and is home to an abundance of wildlife.

Back in the late 1950's when Kariba Dam hydroelectric power station was being built and the dam wall constructed, the Kariba gorge was flooded and being home to thousands of animals along with the local Tonga people, relocation was required.



DAY 3 | GORDONS BAY CONTINUED



Rupert Fothergill led a wildlife rescue operation that lasted five years, calling it 'Operation Noah.' The incredible project saved over 6000 animals which were largely relocated to Matusadona National Park, locally known as the 'Matuzviadonha Hills.' It stretches along the lakeshore between the Sanyati and Ume rivers. The word 'Matuzviadonha' means 'falling dung' and came from the common sightings of elephant dung seen rolling down the steep slopes on the escarpment.

A morning game drive on the historic Spurwing Island can be arranged (additional costs will apply).

We continue cruising to Gordon's Bay, which is famous for its elephant sightings and tiger fishing!

DAY 4 | HOMEWARD BOUND

We invite you to sit back and relax whilst soaking in the spectacular views, sounds and the magic of the lake on your homeward bound leg of the journey.





DAY 4 | OPTIONAL ADD ON NIGHT - UME RIVER

Feel free to extend your cruise by 1 night to take in a stunning, untouched wilderness: The Ume River.

The Ume boasts one of the best game viewing areas on the lake as it is well serviced by the Bumi Hill Anti-Poaching Unit (BHAPU). Not only is there a one-of-a-kind game viewing experience but some of the best fishing. Unequaled views and an Al Fresco Luncheon on the top deck will indelibly be imprinted in your hearts and minds for years to come.

SAMPLE MENU

OPTION 1



Early morning (approx. 6h00):

Coffee with rusks, muffins, cereal etc.

(Guests then depart for early morning fishing or game viewing).



Midday brunch (approx. 11h00):

Bacon and eggs, savoury mince, toast etc.

(The tender boat will then be prepared again with a cold box for clients who wish to go fishing again and game viewing until sunset).



Afternoon tea/coffee (approx. 15h00):

Cake/ biscuits and savoury snacks will be served.

Dinner (approx. 20h00):

Usually consists of a roast or steak, roast potatoes and seasonal vegetables. Followed by dessert i.e. apple tart and cream/ malva pudding/caramel tart or fruit salad etc. Tea/Coffee.

SAMPLE MENU OPTION 2

Full breakfast (approx. 8h00):

Bacon & eggs, savoury mince, toast etc.

Lunch (approx. 12h00): A pasta dish/ cold meat and salads/ fish and chips/ steak etc.

(The tender boat will then be prepared again with a cold box for clients who wish to go fishing and game viewing until sunset).

Afternoon tea/coffee (approx. 15h00):

Cake/ biscuits and savoury snacks will be served.

Dinner (approx. 20h00):

Usually consists of a roast or steak, roast potatoes and seasonal vegetables. Followed by dessert i.e. apple tart and cream/ malva pudding/caramel tart or fruit salad etc. Tea/Coffee.





FLAME

of Africa

TOURS, TRAVEL & SAFARI



The Lady Jacqueline